

PERSONAL NAVIGATOR



SATURDAY, APRIL 13, 2013

Sunrise: 6:58 a.m. Sunset: 7:47 p.m.
Evening Attire: Cruise Casual
All Aboard: 3:45 p.m.

Saturday: Partly Cloudy High: 73°F/23°C
Sunday: Sunny High: 86°F/30°C

PORT CANAVERAL, FLORIDA



Join us tonight in the beautiful Walt Disney Theatre for a magical, musical journey through the wonderland of the Disney Fantasy featuring the Walt Disney Theatre Cast; World Famous Disney Characters and the Comedy & Juggling of Mike Price.

**WALT DISNEY THEATRE
DECK 3 & 4, FORWARD**
6:15 p.m. & 8:30 p.m.



Assistance available at the entrance to the Walt Disney Theatre 30 minutes prior to show time.

Welcome Aboard!

Your Stateroom & Luggage

Staterooms will be ready at 1:30 p.m. Stateroom hosts will deliver luggage throughout the day until 5:30 p.m.

Staterooms with Bunk Beds

Bunk beds are recessed into the ceiling and will be prepared during evening turndown service by your Stateroom Host/ess.

To Change Dining Assignment

Requests for different seating times will be taken today:

- 1:00 - 3:15 p.m. - Royal Court
- 3:15 - 5:00 p.m. - Please dial 7-1831/ 7-1832/ 7-1833

Palo & Remy Dining Reservations

Are required and will be taken on a first come basis today at:

- 1:00 p.m. - 3:15 p.m. Palo & Remy
- 3:15 - 5:00 p.m. Please leave a voice mail at 7-9735 for Palo or 7-9734 for Remy.

Dinner

- 5:45 p.m. - First seating
- 8:15 p.m. - Second seating

Please check your dining tickets for details of your dining rotation, and bring them to your specific dining location. There is no need to wait in line prior to dinner. Dining Rooms open at designated seating times and your table is reserved each night of your cruise.

SAILING AWAY

It's time to go Sailing Away! Join Mickey and Minnie, along with Tinker Bell and the rest of the gang, as they welcome you aboard the Disney Fantasy.

**Deck Stage,
Deck 11, Midship,
4:30 p.m.**

Don't Miss:

Disney Fantasy - Talent Show Sign Ups

Guest Services, Deck 3, Midship

Does your family have what it takes to make their performing dreams come true? Find out at the Disney Fantasy Family Talent Show - dare to show your family's flair! Pre-register at the Guest Services Desk, Deck 3, Midship. Your last chance to sign up is at 4:00 p.m. on Thursday.

Walking Ship Tour

Meet at Preludes, Deck 3, Forward - 1:00 & 2:00 p.m.

Enjoy the beauty of the Disney Fantasy with your Cruise Staff in this guided tour.

Mirror, Mirror

D Lounge, Deck 4, Midship - 9:45 p.m.

Head to D Lounge for the fairest game show of them all, Mirror, Mirror featuring the Magic Mirror and everyone's favorite dwarf, Dopey.

Match Your Mate

The Tube, Deck 4, Aft - 10:30 p.m.

It's time to play everyone's favorite couples game show - Match Your Mate!



Visit Shutters for all your photographic needs, from Digital cameras, batteries and accessories. All photos taken during this cruise will be available for viewing on our photo kiosks at Shutters Digital, as well as in your photo folder at Shutters, Deck 4, Midship.

DINNER MENU

Animator's Palate: Pacific Rim Cuisine
Enchanted Garden: Continental Market
Royal Court: French Dinner

DRINK OF THE DAY

Ooh La La (Alcoholic)
Espresso Chiller (Non Alcoholic)

IMPORTANT NUMBERS

Fire/Security: 7-3001
Medical Emergency: 7-3000
Health Center: 7-1923

FUN FOR ALL AGES HIGHLIGHTS

CRUISE HIGHLIGHTS

Saturday	PORT CANAVERAL <i>Port Departure: 5:00 pm</i> <i>All Aboard: 3:45 pm</i> <i>Attire: Cruise Casual</i>	A FANTASY COME TRUE: WELCOME SHOW <i>Walt Disney Theatre</i> <i>6:15 p.m. & 8:30 p.m.</i>
Sunday	DAY AT SEA <i>Attire: Formal</i>	DISNEY'S ALADDIN <i>Walt Disney Theatre</i> <i>6:15 p.m. & 8:30 p.m.</i>
Monday	GRAND CAYMAN <i>All Ashore: 10:45 am</i> <i>All Aboard: 4:30 pm</i> <i>Attire: Cruise Casual</i>	SHOWTIME: RICKY KALMON <i>Walt Disney Theatre</i> <i>6:15 p.m. & 8:30 p.m.</i>
Tuesday	COSTA MAYA <i>All Ashore: 1:00 pm</i> <i>All Aboard: 5:30 pm</i> <i>Attire: Cruise Casual</i>	DISNEY WISHES <i>Walt Disney Theatre</i> <i>6:15 p.m. & 8:30 p.m.</i>
Wednesday	COZUMEL <i>All Ashore: 8:30 am</i> <i>All Aboard: 5:30 pm</i> <i>Attire: Pirate or Cruise Casual</i>	OZ THE GREAT & POWERFUL (PG) · DOLBY 3D <i>Walt Disney Theatre</i> <i>5:15 p.m. & 8:10 p.m.</i>
Thursday	DAY AT SEA <i>Attire: Semi Formal</i>	DISNEY'S BELIEVE <i>Walt Disney Theatre</i> <i>6:15 p.m. & 8:30 p.m.</i>
Friday	CASTAWAY CAY <i>All Ashore: 9:30 am</i> <i>All Aboard: 4:30 pm</i> <i>Attire: Cruise Casual</i>	AN UNFORGETTABLE JOURNEY <i>Walt Disney Theatre</i> <i>6:15 p.m. & 8:30 p.m.</i>

Subject to change.

ADULT ACTIVITY HIGHLIGHTS



FITNESS CLASSES
Senses Spa and Salon has a variety of seminars and fitness classes available throughout the cruise.

BEVERAGE SEMINARS

Your Beverage team has a host of tastings and seminars to entertain and educate you. Stop by La Piazza, Deck 4, Aft to pre-book these experiences (nominal fee applies).

Mixology - Wine Tasting - Martini Tasting - Champagne Tasting - Beer Tasting - Cognac Tasting - Whisky Tasting - Amari Tasting - Tequila & Margarita Tasting - Chocolate Tasting - Rum Tasting

ART OF THE THEME SHOW TOUR

(18+) Meet at Meridian, Deck 12, Aft - Pre-book at Guest Services

Sunday, Monday, Wednesday and Thursday

Join us on a guided ship tour and discover the key ingredients that make the Disney Fantasy one-of-a-kind. Pre-book at Guest Services, Deck 3, Midship.

FEATURED CABARET ACTS THIS VOYAGE



THE COMEDY & HYPNOSIS OF RICKY KALMON

For over two decades, Ricky Kalmon's hypnosis show has amazed audiences around the world. Ricky is the star of SNAP! that airs on Disney Channel. An exciting and high-energy experience, Ricky's live shows are the 'Only Comedy Show Where the Audience Becomes the Stars'. His uniqueness comes from the way he combines music, audience participation, and comedy to create an unforgettable show which is unmatched by anyone. It's a show that will keep you on the edge of your seat and take you on a vacation of the mind! A Ricky Kalmon show is more than a comedy show—it's an experience!



THE COMEDY & JUGGLING OF MIKE PRICE

Mike Price's ability to invent and perform the most technically difficult tricks in the world allowed him to capture the gold medal at the International Juggling Championships in Montreal, Canada. Mike has performed his show at some of the hottest and most famous nightclubs throughout the United States and Europe, including the Club Island Paradise Ibiza. He has traveled and performed at more shows than most jugglers do in a lifetime and he has made people from all over the world and from all age groups become fans of juggling.



THE COMEDY & VENTRILOQUISM OF TAYLOR MASON

Combining music, ventriloquism, comedy and audience participation sounds like a musical theater production, but it's really one man! Taylor Mason makes people of all ages laugh and laugh hard. His quick wit, flawless delivery & polished material make him a hit with Guests of all ages.



THE COMEDY & MAGIC OF LEVENT

Levent's fast paced act is a combination of Magic and Madness. In addition to his phenomenal sleight of hand, he keeps audiences laughing at his hilarious off the wall sight gags and highly original comedy. Levent captivates his audiences with style, exceptional skill, personality and an outrageous sense of humour. He is truly one of the funniest comedian magicians in the country today.



GUEST DJ CLINT KUPER

DJ Clint Kuper is a premiere DJ out of the Pacific Northwest with over 10 years of experience. DJ Clint Kuper has delivered his party rocking and genre bursting perspective to parties, clubs and events all over the US. He has also performed for some of the biggest names in business.

FREE CARD JACKPOT BINGO

D Lounge, Deck 4, Midship

Card Sales - 7:15 p.m.

Game Starts - 7:30 p.m.

Four CASH prizes are up for grabs, raffle prizes and a free card for everyone in attendance for game number three.



YOUTH ACTIVITIES HIGHLIGHTS



Deck 5, Midship (7-5864) 12:00 p.m. - 3:00 p.m., 4:30 p.m. - 11:00 p.m.
 Infants and Toddlers can enjoy toys and activities at It's A Small World Nursery. Reservations are first come, first served so please stop by!



Deck 5, Midship (7-1440)
 12:00 p.m. - 3:00 p.m., 4:30 p.m. - 12:00 Mid.



Deck 5, Midship (7-1445)
 12:00 p.m. - 3:00 p.m., 4:30 p.m. - 12:00 Mid.

REGISTRATION FOR 3-12 YEAR OLDS

Meet the Youth Activities Team in the Oceaneer Lab and Oceaneer Club, complete your registration & learn all about the Themed Experiences this cruise!



CLUBHOUSE SERIES - The Clubhouse Themed Experiences focus on movement and feature content which appeals to younger children. *Recommended seven years and younger.*



STORYBOOK SERIES - The Storybook Series Themed Experiences are designed with a strong connection to the Disney classic stories.



JUMP UP! SERIES - The Let's Move! Themed Experiences will include large ground games & movement-oriented activities.



CREATE & INVENT SERIES - The Create & Invent Themed Experiences will have a tactile focus allowing children to create and admire their work.



IN THE SPOTLIGHT SERIES - The In The Spotlight Themed Experiences focus on children's stage presence with lots of activities and enthusiasm. *Recommended seven years and older.*



SOLVE IT! SERIES - The Solve It! Themed Experiences are less active, but will challenge children with problem/solutions-based activities. *Recommended seven years and older.*



OUT AND ABOUT SERIES - Set outside secured Youth Activities spaces, very active, appealing to Tweens. *Recommended 8 - 14 years.*



YOUTH ACTIVITIES OPEN HOUSE - A non-secured program with activities for families, adults and children of all ages to enjoy together.

DINE & PLAY

A convenience for families dining at 8:15 p.m., our Youth Activities Counselors will be available at 9:15 p.m. at the entrance of Royal Court, Enchanted Garden and Animator's Palate dining rooms to bring registered children to join the fun in the Youth Activity areas.

YOUTH ACTIVITIES OPEN HOUSE

Open House is an opportunity for all to come and participate in a variety of exciting activities and free time in It's A Small World Nursery, Oceaneer Club, Lab, Edge and Vibe throughout the cruise. During these times secured programming will still be offered in the other venue for those looking to check their children into care.

Deck 13, Midship (7-9743) - 12:00 p.m. - 3:00 p.m., 4:30 p.m. - 12:00 Mid.

(11- 14 YEAR OLDS)

Edge is an interactive play space where tweens can play video games, watch television and participate in arts and crafts with kids their own age.

TAKING IT TO THE EDGE

10:15 p.m.

Come to the Edge and get all the info you need to squeeze every bit of fun out of your stay onboard.



Entrance on Deck 4, Forward (7-9418)
 12:00 p.m. - 3:00 p.m., 4:30 p.m. - 1:00 a.m.

(14-17 YEAR OLDS)

THE DOWNLOAD

10:30 p.m.

Come up to Vibe and help plan all the fun activities you will be doing this cruise with your new friends! We'll use our very own Teens-only intranet database to decide how our week will go!

BUENA VISTA THEATRE

Feature Movies this Voyage

SATURDAY - PORT CANAVERAL

5:45 p.m. PG The Muppets
 8:15 p.m. PG The Muppets
 10:30 p.m. G Disneynature: Chimpanzee

SUNDAY - DAY AT SEA

8:30 a.m. G Finding Nemo DOLBY.3D
 10:30 a.m. PG Brave
 3:00 p.m. PG Wreck-It Ralph DOLBY.3D
 5:15 p.m. PG-13 The Avengers DOLBY.3D
 7:45 p.m. PG-13 The Avengers DOLBY.3D
 10:30 p.m. PG-13 Lincoln

MONDAY - GRAND CAYMAN

8:00 a.m. PG Brave DOLBY.3D
 1:15 p.m. PG Frankenweenie DOLBY.3D
 3:00 p.m. PG-13 Lincoln
 5:45 p.m. PG Brave DOLBY.3D
 8:30 p.m. PG Brave DOLBY.3D
 11:00 p.m. PG Wreck-It Ralph DOLBY.3D

TUESDAY - COSTA MAYA

1:45 p.m. G Disneynature: Wings of Life
 3:30 p.m. PG Brave oc
 5:30 p.m. PG Wreck-It Ralph DOLBY.3D
 8:00 p.m. PG Wreck-It Ralph DOLBY.3D
 10:30 p.m. PG-13 The Avengers DOLBY.3D

WEDNESDAY - COZUMEL

12:00 p.m. PG Wreck-It Ralph DOLBY.3D
 2:15 p.m. PG-13 The Avengers oc
 4:45 p.m. PG-13 Lincoln
 7:45 p.m. PG-13 Lincoln
 11:00 p.m. PG Oz The Great and Powerful

THURSDAY - DAY AT SEA

9:00 a.m. PG Wreck-It Ralph oc
 11:15 a.m. G Disneynature: Wings of Life
 1:00 p.m. PG Oz The Great and Powerful DOLBY.3D
 5:45 p.m. PG Brave DOLBY.3D
 8:15 p.m. PG Brave DOLBY.3D
 10:45 p.m. PG-13 Lincoln

FRIDAY - DISNEY'S CASTAWAY CAY

8:00 a.m. PG Frankenweenie DOLBY.3D
 10:00 a.m. PG Oz The Great and Powerful oc
 12:30 p.m. PG Wreck-It Ralph
 3:00 p.m. PG Oz The Great and Powerful DOLBY.3D
 6:00 p.m. G Disneynature: Wings of Life
 8:30 p.m. G Disneynature: Wings of Life
 10:45 p.m. PG Oz The Great and Powerful

Subject to change.

oc - Open Captioning

MORE TO ENJOY WHILE ONBOARD

PORT & SHOPPING INFORMATION

Meet your Shopping Guides, Johan & Marissa at the Port & Shopping Desk, Deck 4, Midship 7:30 p.m. - 8:30 p.m. Don't miss tomorrow's Port & Shopping Show in the Buena Vista Theatre at 1:30 p.m. Stop by to pick up extra raffle tickets to win a Diamond Pendant at the Shopping Show.

PLAN YOUR NEXT CRUISE

Another Disney Cruise Line vacation is in your future! Book a future cruise today and you'll save 10%, receive up to a \$200 onboard credit, and pay a reduced deposit! Visit the Future Cruise Sales Desk, Deck 4, Midship. Book by 8:30 p.m. Monday for a chance to win \$100 Onboard Credit for this cruise!

DISNEY VACATION CLUB® MEMBERS CELEBRATION

Members! Mix and mingle with other Members and learn how you can enhance your Membership! Please see a Disney Vacation Club representative on Deck 4, Midship, or call 7-2805 from your stateroom phone for more information.

ONBOARD AIRLINE CHECK IN

If you would like to have your boarding passes printed for you onboard and have your luggage taken to the airport for you, register before midnight on Wednesday. If you have Disney Cruise Line airport transfer to Orlando International Airport and fly with one of the participating airlines, stop at Guest Services, Deck 3, Midship to register.

SURF @ SEA

\$0.75 per minute, or save money by buying blocks of time. \$55.00 for 100 minutes, \$100.00 for 250 minutes and \$150.00 for 500 minutes. Wireless information sheets are available at Guest Services, Deck 3, Midship.

Please note: Due to satellite connectivity, onboard internet service will be noticeably slower than you may be accustomed to and may at times be interrupted or unavailable.

ON DEMAND TV

Watch Disney movies, Hollywood features, ABC Shows, and even captioned content, plus much more "On Demand" for FREE in the comfort of your stateroom! Bookmark your movie and come back to watch it later. Press MENU on your stateroom television remote control, and follow the prompts.

Disney Cruise Line PORT ADVENTURES

The best way to explore our ports of call is through the eyes of a Port Adventure. Our tours are designed to ensure that you see the best that our ports have to offer. Explore the crystal clear waters or swim with the rays at Stingray City in Grand Cayman.

Be amazed at incredible Mayan ruins in Costa Maya or swim with dolphins in Cozumel.

Stop by the Port Adventures Desk, Deck 5, Midship.

SHOPPING

GREAT OFFERS ONBOARD

Get a Disney Cruise Line duffel for \$17.95 when you spend \$30 or more and a Disney Cruise Line towel for \$14.95 when you spend \$25 or more. Promotion available in Mickey's Mainsail, Sea Treasures, and Whitecaps. Shops are located Deck 3, Forward.

ALBERTO COLLECTIONS

Alberto Collections is onboard this week at Whitecaps with a spectacular selection of hand-made, luxurious jewels. Stop by and select a unique design that best suits your personal style. Whitecaps, Deck 3, Forward.

BIBBIDI BOBBIDI BOUTIQUE

A makeover fit for a princess! Fairy Godmothers-in-Training are ready with magic and pixie dust to give your princess the transformation of a lifetime. Make your reservations at the Bibbidi Bobbidi Boutique, Deck 5, Midship. Limited space available.

BRAND NAME WATCHES

Wide range of name brand watch collections. Men's and women's styles are available on watch brands such as Fossil, Kenneth Cole, Guess, and DKNY. Available in Whitecaps, Deck 3, Forward.

BLUE GALLERY CONTEMPORARY ART

Blue Gallery's beautiful contemporary art collection features some of the most recognizable artists of today. Stop by Vista Gallery to view these great works at great prices! Vista Gallery, Deck 4, Midship

GET YOUR CRUISE STARTED

Disney Fantasy logo merchandise, autograph books, pens, lanyards, sunglasses, and much more available in Mickey's Mainsail and Sea Treasures, Deck 3, Forward.

Due to port regulations, when the ship is docked, the stores will remain closed.



SPA SPECIAL

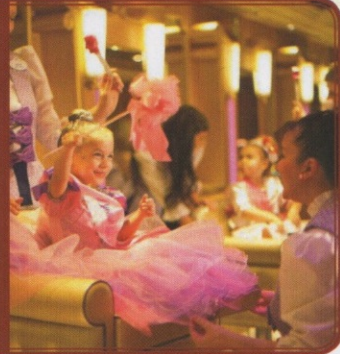
Book and receive your treatment today and you will receive a complimentary extra 15 minute treatment of your choice.

Call Senses Spa & Salon
7-1465

SENSES
SPA & SALON

BIBBIDI BOBBIDI BOUTIQUE

Becoming the princess of your dreams creates memories for a lifetime. Where Fairy Godmothers in training are ready with Pixie Dust and Magic! Make your reservations for princess makeovers and the Pirate League today. Limited space available. Bibbidi Bobbidi Boutique is located on Deck 5, Midship, or call ext. 9438 to make a reservation.



Shutters

GET THE PICTURE!

Amazing offer! Order all your stateroom photos on a CD for only \$349.95 and for \$50 more you can take home the printed copy as well! All your stateroom photos in digital as well as printed format for only \$399.95! Your photos will be ready for viewing in Shutters Digital, Deck 4, Midship this evening. Visit Shutters, Deck 4, Midship, to learn more. Conditions apply.

**Please note that photos are available for viewing on our interactive photo kiosks approximately five hours after being taken and are only available for purchase during this cruise.*

IMPORTANT INFORMATION

Security Notice

All Guests (including children) who wish to disembark the ship are required to present their Key to the World card at the gangway. A photo ID is also required for those Guests who are 18 years of age or older. Guests under the age of 18 are required to have a Parent, Guardian or other responsible adult sign an authorization form at the time it is given out if they wish to go ashore unaccompanied. Authorization forms are available at the gangways and Guest Services.

Please Note:

Please remember to use plenty of sunscreen and mosquito repellent when venturing ashore.

Cold and Flu Reminder

Please wash hands frequently and thoroughly, particularly before meals. Contact the Health Center by dialing 7-1923, should anyone in your party become ill.

Corridor Quiet Hours

As a courtesy to all our Guests, please recognize quiet hallway hours from 10:00 p.m. til 8:00 a.m.

Inclement Weather

For the safety of all Guests, outdoor events may be changed due to unforeseen weather conditions.

Environmental Message

With Disney's commitment to the Environment, please refrain from throwing anything over the Ship's side. Thank you!

No Reserved Seats Policy

As a courtesy to all our Guests, we kindly advise that the saving of seats is not permitted in the Walt Disney Theatre, and the saving of the sun loungers is not permitted on Deck 11, 12, and 13. Items left unattended will be returned to lost and found at Guest Services, Deck 3 Midship.

Smoking

For the comfort of our guests the following areas are designated as Smoking areas: - Promenade Deck (Deck 4), Smoking is permitted Port Side, Aft only from 6:00 p.m. to 6:00 a.m.

- Currents - Deck 13, Forward, Port Side.

- Meridian Bar - Deck 12, Aft, Port Side, outside.

- Smoking is permitted on stateroom verandahs.

Smoking is prohibited inside all guest staterooms. Guests found smoking in their stateroom will be charged a \$250 stateroom recovery fee.

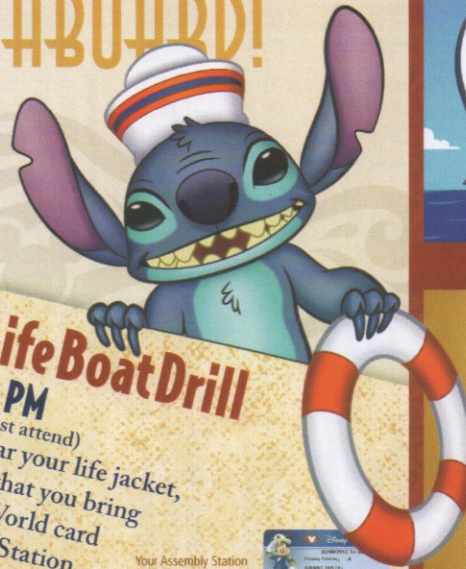
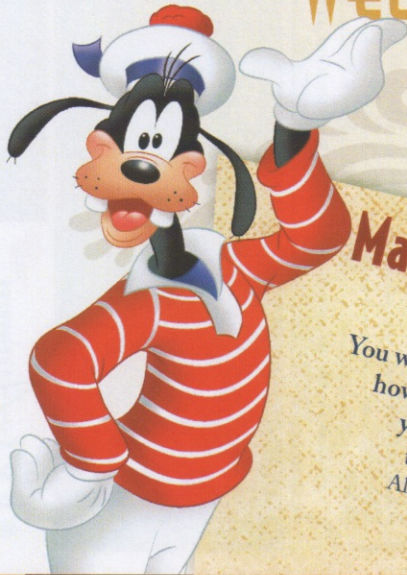
Walt Disney Theatre

Theatrical performances may use artificial fog, strobe lights, pyrotechnics and other special effects. For the safety of our performers and the comfort of those around you, the use of any photography, video recording device or any electronic equipment is prohibited.

Verandah Safety

Please do not leave any combustible materials on your balcony when not present in your stateroom for safety reasons.

WELCOME ABOARD!



Mandatory Life Boat Drill

4:00 PM

(All Guests must attend)
You will not need to wear your life jacket, however it is critical that you bring your Key To The World card to your Assembly Station. All ship services will be suspended between 3:45 and 4:30 p.m.

Your Assembly Station is indicated on your Key To The World card.



SAILING AWAY

It's time to go Sailing Away! Join Mickey and Minnie along with Tinker Bell and the rest of the gang as they welcome you aboard the Disney Fantasy.

**Deck Stage,
Deck 11, Midship,
4:30 p.m.**

Afternoon	1:45	2:00	2:15	2:30	2:45	3:00	3:15	3:30	3:45	4:00	4:15	4:30	4:45	5:00	5:15	5:30	5:45	6:00	6:15	6:30	6:45									
FUNNEL VISION																						Tarzan (PG) Funnel Vision > 7:11 p.m.								
BUENA VISTA THEATRE																							The Muppets (PG) Duration: 1 Hours 43 Minutes > 7:28 p.m.							
CHARACTER																							Mickey (Lobby Atrium (V)) Snow White (Dk 4, Mid) Donald (Lobby Atrium (V))							
FUN FOR ALL AGES	Pool Side Jams with DJ Brandon Deck Stage, Deck 11, Midship					Walking Ship Tour Meet at Preludes (Earlier Tour starts at 1:00 pm)					Disney Vacation Club Members Celebration The Tube					Live Piano with Gayla Smith Lobby Atrium					SAILING AWAY Deck Stage					TINKER BELL'S MAGIC MIRROR Walt Disney Theatre				
ADULTS						Spa Raffle Senses Spa & Salon					The Masters - Round Three O'Gills Pub (Subject to Satellite Availability)					The Masters - Round Three O'Gills Pub (Subject to Satellite Availability)														
VIBE 14-17 YEARS OLD	☺ Open House															☺ Open House					Open for Teens									
EDGE 11-14 YEARS OLD	☺ Open House															☺ Open House										Games Galore				
OCEANEER LAB 3-12 YEARS OLD	Open House and Registration		☺ Magic Playfloor		Registration								☺ Open House and Registration										Open for Secured Activities		Ice Breakers					
OCEANEER CLUB 3-12 YEARS OLD	Open House and Registration		☺ Magic Playfloor		Registration								☺ Open House and Registration																	



Evening	7:00	7:15	7:30	7:45	8:00	8:15	8:30	8:45	9:00	9:15	9:30	9:45	10:00	10:15	10:30	10:45	11:00	11:15	11:30	11:45	12:00	
FUNNEL VISION					Brother Bear (G) Funnel Vision								The Parent Trap (PG) Funnel Vision									
BUENA VISTA THEATRE					The Muppets (PG) Duration: 1 Hours 43 Minutes								Disney Nature: Chimpanzee (PG) Duration: 1 Hours 40 Minutes									
CHARACTER		Pluto (Lobby Atrium (V))		Belle (Dk 4, Mid)							Belle (Dk 4, Mid)		Peter Pan (Dk 4, Mid)									
FUN FOR ALL AGES	Bingo Pre Sales		Free Card Jackpot Bingo BINGO D Lounge		TINKER BELL'S MAGIC MIRROR Walt Disney Theatre					Disney's Mirror Mirror D Lounge		Family Superstar Karaoke D Lounge										
ADULTS	Family Dance Party with Guest DJ Clint Kuper The Tube					Live Piano with Gayla Smith La Piazza					Club 18*21 - Ice Breaker O'Gills Pub		Live Piano with Gayla Smith La Piazza		Bring The Tube Alive with Guest DJ Clint Kuper The Tube							
VIBE 14-17 YEARS OLD	Open for Teens										Dodgeball					The Download		Zombified				
EDGE 11-14 YEARS OLD	Games Galore		Profiles		Spoons		Catch & Push		Ice Breakers				Taking it to The Edge		Gender Wars							
OCEANEER LAB 3-12 YEARS OLD	Ice Breakers		Choose Your Cruise				Meet Your Counselors				GAGA Ball				Magic Playfloor							
OCEANEER CLUB 3-12 YEARS OLD	Open for Secured Activities		☺ Magic Playfloor		♥ Glow Jam		☺ Choose Your Cruise				♥ Once Upon a Time		♥ Create Your Own Nametag		Movie Time							

Symbol for activities that will be repeated during the cruise

Youth Activities Open House

FOLD

Fold along the dotted lines and take me with you so you don't miss any of the fun!

FOLD

IN THE SPOTLIGHT SERIES

SOLVE IT! SERIES

JUMP UP! SERIES

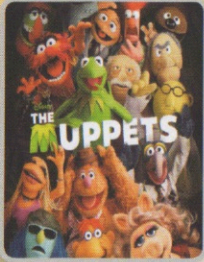
CREATE & INVENT SERIES

CLUBHOUSE SERIES

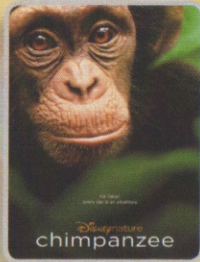
STORYBOOK SERIES

SATURDAY, APRIL 13, 2013 - PORT CANAVERAL

BUENA VISTA THEATRE



5:45 p.m. & 8:15 p.m.
Duration: 1 hr 43 min
Rating: PG



10:30 p.m.
Duration: 1 hr 40 min
Rating: PG

Character Appearances

MICKY MOUSE

Lobby Atrium (V)
5:15 p.m. & 10:00 p.m.
Preludes - 7:15 p.m.

SNOW WHITE

Deck 4, Balcony - 5:30 p.m.
Preludes - 7:45 p.m.

DONALD DUCK

Lobby Atrium (V) - 5:45 p.m.

PLUTO

Lobby Atrium (V) - 7:15 p.m.

PRINCESS TIANA

Deck 4, Balcony - 7:15 p.m.
Lobby Atrium (P) - 9:30 p.m.

BELLE

Deck 4, Balcony
7:45 p.m. & 9:30 p.m.

GOOFY

Lobby Atrium (V)
7:45 p.m. & 9:30 p.m.

PETER PAN

Deck 4, Balcony - 10:00 p.m.



(H) Hallway - (S) Starboard Side - (P) Port Side - (V) Vestibule

For details of daily Disney character appearances, refer to the character line on your Navigator Grid, or the digital character board in the Lobby Atrium.

YOUTH ACTIVITIES THEMED EXPERIENCES

CLUBHOUSE SERIES
focuses on movement and features content which appeals to younger children.

JUMP UP! SERIES
includes large ground games & movement-oriented activities.

IN THE SPOTLIGHT SERIES
focuses on children's stage presence with lots of activities and enthusiasm.

STORYBOOK SERIES
is designed with a strong connection to the Disney classic stories.

CREATE & INVENT SERIES
will have a tactile focus allowing children to create and admire their work.

SOLVE IT! SERIES
are less active, but will challenge children with problem/solutions-based activities.

YOUTH ACTIVITIES OPEN HOUSE

A non-secured program with activities for families, adults and children of all ages to enjoy together.

SHIP DIRECTORY

YOUTH ACTIVITIES		
DISNEY'S OCEANEER CLUB	DECK 5, MID	12:00 PM - 3:00 PM 4:30 PM - 12:00 MID
DISNEY'S OCEANEER LAB	DECK 5, MID	12:00 PM - 3:00 PM 4:30 PM - 12:00 MID
EDGE	DECK 13, MID	12:00 PM - 3:00 PM 4:30 PM - 12:00 MID
VIBE	DECK 4, FWD	12:00 PM - 3:00 PM 4:30 PM - 1:00 AM
IT'S A SMALL WORLD NURSERY	DECK 5, MID	12:00 PM - 3:00 PM 4:30 PM - 11:00 PM

RECREATION		
AQUADUCK	DECK 12, MID	12:00 PM - 3:00 PM 4:30 PM - 10:00 PM
AQUALAB	DECK 12, AFT	12:00 PM - 3:30 PM 4:30 PM - 7:00 PM
DONALD'S POOL	DECK 11, MID	12:00 PM - 3:30 PM 5:30 PM - 12:00 MID
GOLF/SPORTS SIMULATORS	DECK 13, AFT	12:00 PM - 3:30 PM 4:30 PM - 6:00 PM
GOOFY GOLF	DECK 13, AFT	12:00 PM - 10:00 PM
GOOFY'S SPORTS DECK	DECK 13, AFT	12:00 PM - 6:00 PM
MICKEY'S POOL	DECK 11, MID	12:00 PM - 11:00 PM
MICKEY'S SLIDE	DECK 11, MID	12:00 PM - 3:30 PM 4:30 PM - 6:00 PM
MIDSHIP DETECTIVE AGENCY	DECK 2 & 5, MID	11:30 AM - 10:00 PM
NEMO'S REEF	DECK 11, MID	12:00 PM - 3:30 PM 4:30 PM - 6:00 PM
PORT ADVENTURES DESK	DECK 5, MID	12:00 PM - 3:30 PM 4:30 PM - 8:30 PM
QUIET COVE POOL	DECK 11, FWD	12:00 PM - 12:00 MID
SATELLITE FALLS	DECK 13, FWD	12:00 PM - 6:00 PM
SENSES FITNESS CENTER	DECK 11, FWD	11:30 AM - 10:00 PM

GENERAL INFORMATION		
ARR-CADE	DECK 11, AFT	24 HOURS
DISNEY VACATION CLUB	DECK 4, MID	5:00 PM - 10:00 PM
FUTURE CRUISE SALES DESK	DECK 4, MID	7:30 PM - 8:30 PM
GUEST SERVICES	DECK 3, MID	24 HOURS
MEDICAL HEALTH CENTER	DECK 1, FWD	4:30 PM - 7:00 PM
PORT & SHOPPING DESK	DECK 4, MID	7:30 PM - 8:30 PM
PRELUDES	DECK 3, FWD	5:45 PM - 6:30 PM 8:00 PM - 8:45 PM
SENSES SPA AND SALON	DECK 11, FWD	11:30 AM - 10:00 PM
SHUTTERS PHOTO GALLERY	DECK 4, MID	7:00 PM - 11:00 PM
SHUTTERS DIGITAL	DECK 4, MID	OPENS AT 5:00 PM

SHOPPING		
BIBBIDI BOBBIDI BOUTIQUE	DECK 5, MID	12:00 PM - 3:00 PM 5:00 PM - 9:00 PM
MICKEY'S MAINSAIL	DECK 3, FWD	5:45 PM - 11:00 PM
SEA TREASURES	DECK 3, FWD	5:45 PM - 11:00 PM
VISTA GALLERY	DECK 4, MID	
WHITE CAPS	DECK 3, FWD	5:45 PM - 11:00 PM

DINNER MENU	Animator's Palate: Pacific Rim Cuisine	DRINK OF THE DAY	Ooh La La (Alcoholic)	WEATHER FORECAST	Saturday: Partly Cloudy
	Enchanted Garden: Continental Market		Espresso Chiller (Non Alcoholic)		High: 73°F/23°C
	Royal Court: French Dinner				Sunday: Sunny
Dining Times: 5:45 p.m. & 8:15 p.m.				High: 86°F/30°C	

Evening Attire: Cruise Casual

DINING & LOUNGES

LUNCH			
CABANAS	DECK 11, AFT	12:00 PM -	3:00 PM
ENCHANTED GARDEN	DECK 2, MID	12:00 PM -	2:00 PM
FILLMORE'S FAVORITES	DECK 11, MID	12:00 PM -	3:30 PM
		4:15 PM -	7:00 PM
LUIGI'S PIZZA	DECK 11, MID	12:00 PM -	3:30 PM
		4:15 PM -	6:00 PM
TOW MATER'S GRILL	DECK 11, MID	12:00 PM -	3:30 PM
		4:15 PM -	10:00 PM

DINNER			
ANIMATOR'S PALATE	DECK 3, AFT	5:45 PM &	8:15 PM
ENCHANTED GARDEN	DECK 2, MID	5:45 PM &	8:15 PM
ROYAL COURT	DECK 3, MID	5:45 PM &	8:15 PM
PALO (18+) (RESERVATIONS REQ. & NOM. FEE APPLIES)	DECK 12, AFT	6:00 PM -	8:30 PM
REMY (18+) (RESERVATIONS REQ. & NOM. FEE APPLIES)	DECK 12, AFT	6:00 PM -	8:30 PM

LATE NIGHT SNACKS			
LA PIAZZA (18+)	DECK 4, AFT	10:45 PM -	11:45 PM
LUIGI'S PIZZA	DECK 11, MID	9:30 PM -	12:00 MID

ADDED FEATURES			
BEVERAGE STATION	DECK 11, MID		24 HOURS
EYE SCREAM	DECK 11, MID	12:00 PM -	11:00 PM
ROOM SERVICE	DIAL 0		24 HOURS

ENTERTAINMENT - LOUNGES - BARS			
Adults must be 21 and older to consume alcoholic beverages.			
BON VOYAGE	DECK 3, MID	12:00 PM -	11:00 PM
COVE BAR (18+)	DECK 11, FWD	12:00 PM -	11:00 PM
COVE CAFE (18+)	DECK 11, FWD	11:30 AM -	12:00 MID
CURRENTS (18+)	DECK 13, FWD	12:00 PM -	11:00 PM
D LOUNGE	DECK 4, MID		SHOWTIMES
FROZEN TREATS	DECK 11, MID	12:00 PM -	11:00 PM
LA PIAZZA	DECK 4, AFT	12:00 PM -	12:00 MID
MERIDIAN (18+)	DECK 12, AFT	5:00 PM -	12:00 MID
O'GILLS PUB (18+ AFTER 9:00 PM)	DECK 4, AFT	12:00 PM -	12:00 MID
OOH LA LA (18+)	DECK 4, AFT	5:00 PM -	12:00 MID
OUTLOOK	DECK 14, MID		SUNSET TIMES
SKYLINE (18+)	DECK 4, AFT	5:00 PM -	12:00 MID
THE TUBE (18+)	DECK 4, AFT	10:00 PM -	2:00 AM
VISTA CAFE	DECK 4, MID	12:00 PM -	11:00 PM
WAVES	DECK 12, AFT	12:00 PM -	7:00 PM

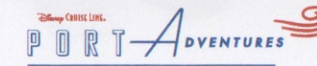
Consumers who order raw or partially cooked, ready-to-eat food of animal origin, are hereby informed that the food is not sufficiently cooked to ensure its safety.

GOOFY'S SPORTS

Digital Simulators

Sports Simulator (Basketball, Baseball, Hockey, football or Soccer) \$12 / half hr, \$20 / hr	Golf Simulator \$25 / half hr, \$45 / hr
---	--

Reservations can be made at the Port Adventures Desk, Deck 5, Midship or at the Simulators, Deck 13, Aft.



Visit the Port Adventures Desk, Deck 5, Midship, for bookings & questions.

IMPORTANT NUMBERS

Fire/Security: 7-3001
Medical Emergency: 7-3000
Health Center: 7-1923